



# MONTHLY MEMBERSHIP PROGRESS REPORT

District 3 O

Results as of: 2/29/2016

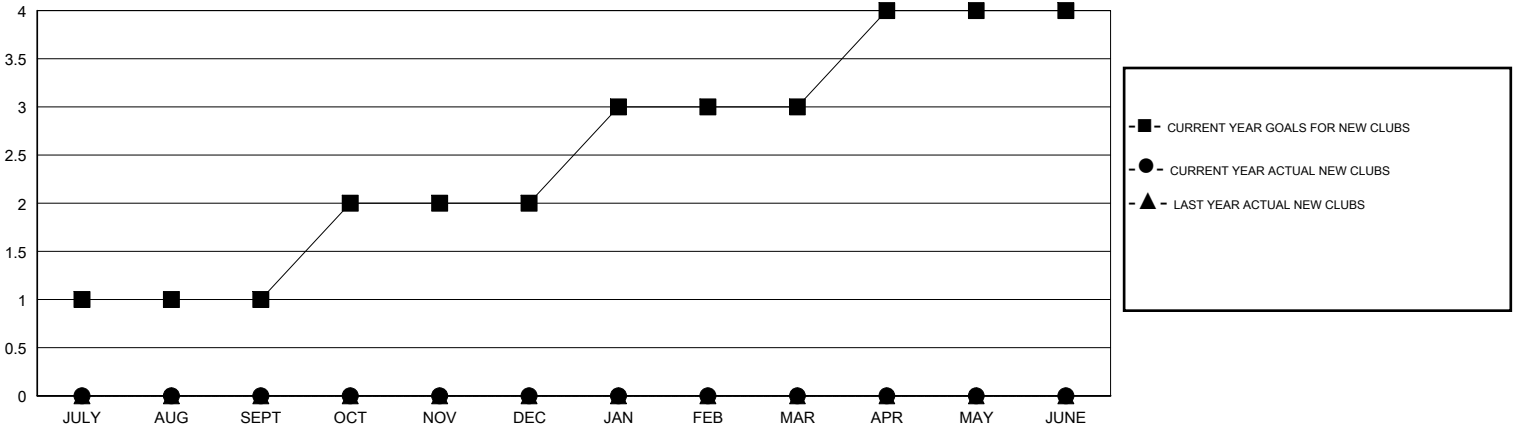
GMT: HAL GRIFFIN

LOCATION OKLAHOMA

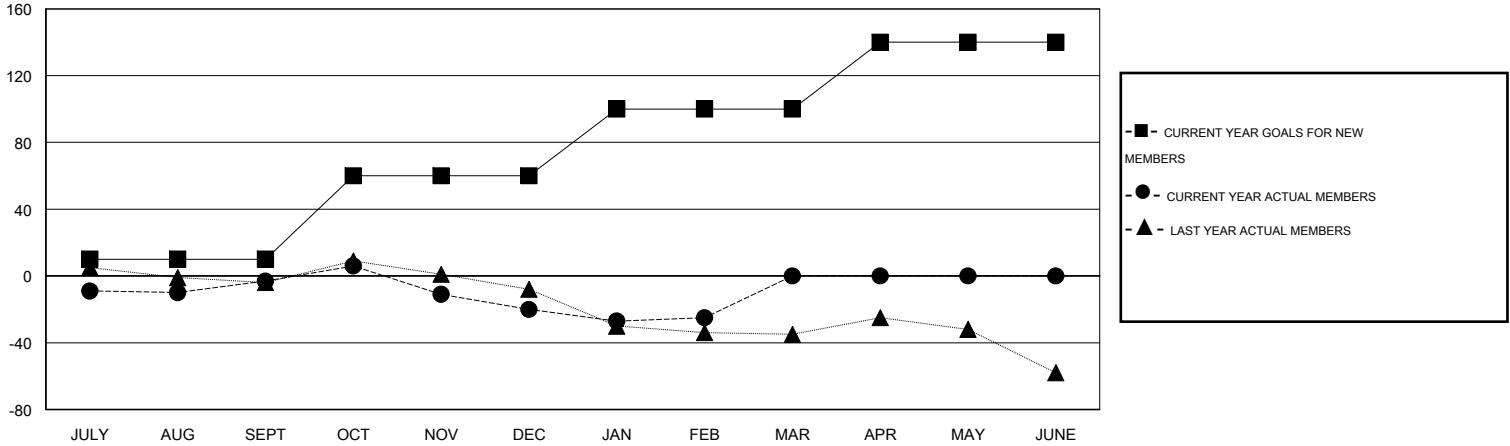
GMT CA 1

Clubs					Members				
RESULTS FOR 2015-2016					RESULTS FOR 2015-2016				
QUARTER	NEW CLUB GOAL	NEW CLUBS	DROPPED CLUBS	NET GAIN/LOSS	QUARTER	NEW MEMBER GOAL	CHARTER AND NEW MEMBERS ADDED	DROPPED MEMBERS	NET GAIN/LOSS
JULY/AUG/SEPT	1	0	0	0	JULY/AUG/SEPT	10	27	30	-3
OCT/NOV/DEC	1	0	1	-1	OCT/NOV/DEC	50	28	45	-17
JAN/FEB/MAR	1	0	0	0	JAN/FEB/MAR	40	21	26	-5
APR/MAY/JUNE	1	0	0	0	APR/MAY/JUNE	40	0	0	0

GOALS AND ACTUAL NEW CLUBS CUMULATIVE



GOALS AND ACTUAL MEMBERS CUMULATIVE



DROPPED CLUBS: 1	20 CLUBS OF 38 ADDED 1 OR MORE NEW MEMBERS	<b>GENDER DISTRIBUTION</b> MALE 584 (65.40%) FEMALE 309 (34.60%)
<b>DROPPED MEMBERS</b> DECEASED 8 CLUB CANCELLED 19 OTHER 74 TOTAL 101	<a href="#">CLICK HERE FOR HEALTH ASSESSMENT DATA</a>	FAMILY UNIT MEMBERS 209 HEAD OF HOUSEHOLD 102 NON-HEAD OF HOUSEHOLD 107